

# Table of Contents

HIGHLIGHTS OF PRESCRIBING INFORMATION	1
FULL PRESCRIBING INFORMATION: CONTENTS*	1
FULL PRESCRIBING INFORMATION	2
1 INDICATIONS AND USAGE	2
2 DOSAGE AND ADMINISTRATION	2
3 DOSAGE FORMS AND STRENGTHS	2
4 CONTRAINDICATIONS	2
5 WARNINGS AND PRECAUTIONS	3
5.1 Not for Acute Use	3
5.2 Immediate Hypersensitivity Reactions	3
5.3 Paradoxical Bronchospasm	3
5.4 Worsening of Narrow-Angle Glaucoma	3
5.5 Worsening of Urinary Retention	3
5.6 Renal Impairment	3
6 ADVERSE REACTIONS	4
6.1 Clinical Trials Experience	4
6.2 Postmarketing Experience	6
7 DRUG INTERACTIONS	6
7.1 Sympathomimetics, Methylxanthines, Steroids	6
7.2 Anticholinergics	7
8 USE IN SPECIFIC POPULATIONS	7
8.1 Pregnancy	7
8.2 Lactation	7
8.4 Pediatric Use	8
8.5 Geriatric Use	8
8.6 Renal Impairment	8
8.7 Hepatic Impairment	8
10 OVERDOSAGE	8
11 DESCRIPTION	9
12 CLINICAL PHARMACOLOGY	10
12.1 Mechanism of Action	10
12.2 Pharmacodynamics	10
12.3 Pharmacokinetics	10
13 NONCLINICAL TOXICOLOGY	12
13.1 Carcinogenesis, Mutagenesis, Impairment of Fertility	

	12
14 CLINICAL STUDIES	13
16 HOW SUPPLIED/STORAGE AND HANDLING	17
17 PATIENT COUNSELING INFORMATION	17
Patient Information	20
What is tiotropium bromide inhalation powder?	20
Who should not take tiotropium bromide inhalation powder?	21
What should I tell my doctor before using tiotropium bromide inhalation powder?	21
How should I take tiotropium bromide inhalation powder?	22
What should I avoid while using tiotropium bromide inhalation powder?	22
What are the possible side effects of tiotropium bromide inhalation powder?	22
How do I store tiotropium bromide inhalation powder?	23
What are the ingredients in tiotropium bromide inhalation powder?	24
What is COPD (Chronic Obstructive Pulmonary Disease)?	24
Instructions for Use	25

## HIGHLIGHTS OF PRESCRIBING INFORMATION

These highlights do not include all the information needed to use **TIOTROPIUM BROMIDE INHALATION POWDER** safely and effectively. See full prescribing information for **TIOTROPIUM BROMIDE INHALATION POWDER**.

**TIOTROPIUM BROMIDE** inhalation powder, for oral inhalation use  
Initial U.S. Approval: 2004

### INDICATIONS AND USAGE

Tiotropium bromide inhalation powder is an anticholinergic indicated for the long-term, once-daily, maintenance treatment of bronchospasm associated with chronic obstructive pulmonary disease (COPD), and for reducing COPD exacerbations (1)

### DOSAGE AND ADMINISTRATION

- **For oral inhalation only. DO NOT swallow tiotropium bromide inhalation powder capsules. Only use tiotropium bromide inhalation powder capsules with the LupinHaler® device (2)**
- Two inhalations of the powder contents of a single tiotropium bromide inhalation powder capsule (18 mcg) once daily (2)

### DOSAGE FORMS AND STRENGTHS

Inhalation powder: Tiotropium bromide inhalation powder capsules contain 18 mcg tiotropium powder (equivalent to 22.5 mcg tiotropium bromide monohydrate USP) for use with LupinHaler device (3)

### CONTRAINDICATIONS

Hypersensitivity to tiotropium, ipratropium, or any components of tiotropium bromide inhalation powder capsules (4)

### WARNINGS AND PRECAUTIONS

- Not for acute use: Not a rescue medication (5.1)
- Immediate hypersensitivity reactions: Discontinue tiotropium bromide inhalation powder at once and consider alternatives if immediate hypersensitivity reactions, including angioedema, urticaria, rash,

bronchospasm, or anaphylaxis, occur. Use with caution in patients with severe hypersensitivity to milk proteins. (5.2)

- Paradoxical bronchospasm: Discontinue tiotropium bromide inhalation powder and consider other treatments if paradoxical bronchospasm occurs (5.3)
- Worsening of narrow-angle glaucoma may occur. Use with caution in patients with narrow-angle glaucoma and instruct patients to consult a physician immediately if this occurs. (5.4)
- Worsening of urinary retention may occur. Use with caution in patients with prostatic hyperplasia or bladder-neck obstruction and instruct patients to consult a physician immediately if this occurs. (5.5)

### ADVERSE REACTIONS

The most common adverse reactions (>5% incidence in the 1-year placebo-controlled trials) were upper respiratory tract infection, dry mouth, sinusitis, pharyngitis, non-specific chest pain, urinary tract infection, dyspepsia, and rhinitis (6.1)

To report SUSPECTED ADVERSE REACTIONS, contact Lupin Pharmaceuticals, Inc. at 1-800-399-2561 or FDA at 1-800-FDA-1088 or [www.fda.gov/medwatch](http://www.fda.gov/medwatch).

### DRUG INTERACTIONS

Anticholinergics: May interact additively with concomitantly used anticholinergic medications. Avoid administration of tiotropium bromide inhalation powder with other anticholinergic-containing drugs. (7.2)

### USE IN SPECIFIC POPULATIONS

Patients with moderate to severe renal impairment should be monitored closely for potential anticholinergic side effects (2, 8.6)

See 17 for PATIENT COUNSELING INFORMATION and FDA-approved patient labeling.

Revised: 05/2025

## FULL PRESCRIBING INFORMATION: CONTENTS\*

### 1 INDICATIONS AND USAGE

### 2 DOSAGE AND ADMINISTRATION

### 3 DOSAGE FORMS AND STRENGTHS

### 4 CONTRAINDICATIONS

### 5 WARNINGS AND PRECAUTIONS

- 5.1 Not for Acute Use
- 5.2 Immediate Hypersensitivity Reactions
- 5.3 Paradoxical Bronchospasm
- 5.4 Worsening of Narrow-Angle Glaucoma
- 5.5 Worsening of Urinary Retention
- 5.6 Renal Impairment

### 6 ADVERSE REACTIONS

- 6.1 Clinical Trials Experience
- 6.2 Postmarketing Experience

### 7 DRUG INTERACTIONS

- 7.1 Sympathomimetics, Methylxanthines, Steroids
- 7.2 Anticholinergics

### 8 USE IN SPECIFIC POPULATIONS

- 8.1 Pregnancy

- 8.2 Lactation
- 8.4 Pediatric Use
- 8.5 Geriatric Use
- 8.6 Renal Impairment
- 8.7 Hepatic Impairment

### 10 OVERDOSAGE

### 11 DESCRIPTION

### 12 CLINICAL PHARMACOLOGY

- 12.1 Mechanism of Action
- 12.2 Pharmacodynamics
- 12.3 Pharmacokinetics

### 13 NONCLINICAL TOXICOLOGY

- 13.1 Carcinogenesis, Mutagenesis, Impairment of Fertility

### 14 CLINICAL STUDIES

### 16 HOW SUPPLIED/STORAGE AND HANDLING

### 17 PATIENT COUNSELING INFORMATION

\*Sections or subsections omitted from the full prescribing information are not listed.

## FULL PRESCRIBING INFORMATION

### 1 INDICATIONS AND USAGE

Tiotropium bromide inhalation powder is indicated for the long-term, once-daily, maintenance treatment of bronchospasm associated with chronic obstructive pulmonary disease (COPD), including chronic bronchitis and emphysema. Tiotropium bromide inhalation powder is indicated to reduce exacerbations in COPD patients.

### 2 DOSAGE AND ADMINISTRATION

**For oral inhalation only. Do not swallow tiotropium bromide inhalation powder capsules, as the intended effects on the lungs will not be obtained. The contents of the tiotropium bromide inhalation powder capsules should only be used with the LupinHaler<sup>®</sup> device [see *Overdosage (10)*].**

The recommended dosage of tiotropium bromide inhalation powder is two inhalations of the powder contents of one tiotropium bromide inhalation powder capsule, once-daily, with the LupinHaler device [see *Patient Counseling Information (17)*]. Do not take more than one dose in 24 hours.

For administration of tiotropium bromide inhalation powder, a tiotropium bromide inhalation powder capsule is placed into the center chamber of the LupinHaler device. The tiotropium bromide inhalation powder capsule is pierced by pressing and releasing the green piercing button on the side of the LupinHaler device. The tiotropium formulation is dispersed into the air stream when the patient inhales through the mouthpiece [see *Patient Counseling Information (17)*].

No dosage adjustment is required for geriatric, hepatically-impaired, or renally-impaired patients. However, patients with moderate to severe renal impairment given tiotropium bromide inhalation powder should be monitored closely for anticholinergic effects [see *Warnings and Precautions (5.6)*, *Use in Specific Populations (8.5, 8.6, 8.7)*, and *Clinical Pharmacology (12.3)*].

### 3 DOSAGE FORMS AND STRENGTHS

**Inhalation Powder:** Tiotropium bromide inhalation powder consists of tiotropium bromide inhalation powder capsules containing tiotropium powder for oral inhalation and a LupinHaler device. Tiotropium bromide inhalation powder capsules contain 18 mcg of tiotropium (equivalent to 22.5 mcg tiotropium bromide monohydrate USP) in a hypromellose capsule with white opaque cap and white opaque body, imprinted with “LU” on cap and “T18” on body. The LupinHaler device is only intended for use with the tiotropium bromide inhalation powder capsules.

### 4 CONTRAINDICATIONS

Tiotropium bromide inhalation powder is contraindicated in patients with a hypersensitivity to tiotropium, ipratropium, or any components of this product [see *Warnings and Precautions (5.2)*]. In clinical trials and postmarketing experience with tiotropium bromide inhalation powder, immediate hypersensitivity reactions, including angioedema (including swelling of the lips, tongue, or throat), itching, or rash have been reported [see *Warnings and Precautions (5.2)*].

## **5 WARNINGS AND PRECAUTIONS**

### **5.1 Not for Acute Use**

Tiotropium bromide inhalation powder is intended as a once-daily maintenance treatment for COPD and should not be used for relief of acute symptoms, i.e., as rescue therapy for the treatment of acute episodes of bronchospasm.

### **5.2 Immediate Hypersensitivity Reactions**

Immediate hypersensitivity reactions, including urticaria, angioedema (including swelling of the lips, tongue, or throat), rash, bronchospasm, anaphylaxis, or itching, may occur after administration of tiotropium bromide inhalation powder. If such a reaction occurs, therapy with tiotropium bromide inhalation powder should be stopped at once and alternative treatments should be considered. Given the similar structural formula of atropine to tiotropium, patients with a history of hypersensitivity reactions to atropine or its derivatives should be closely monitored for similar hypersensitivity reactions to tiotropium bromide inhalation powder. In addition, tiotropium bromide inhalation powder should be used with caution in patients with severe hypersensitivity to milk proteins.

### **5.3 Paradoxical Bronchospasm**

Inhaled medicines, including tiotropium bromide inhalation powder, may cause paradoxical bronchospasm. If this occurs, it should be treated immediately with an inhaled short-acting beta<sub>2</sub>-agonist such as albuterol. Treatment with tiotropium bromide inhalation powder should be stopped and other treatments considered.

### **5.4 Worsening of Narrow-Angle Glaucoma**

Tiotropium bromide inhalation powder should be used with caution in patients with narrow-angle glaucoma. Prescribers and patients should be alert for signs and symptoms of acute narrow-angle glaucoma (e.g., eye pain or discomfort, blurred vision, visual halos or colored images in association with red eyes from conjunctival congestion and corneal edema). Instruct patients to consult a physician immediately should any of these signs or symptoms develop.

### **5.5 Worsening of Urinary Retention**

Tiotropium bromide inhalation powder should be used with caution in patients with urinary retention. Prescribers and patients should be alert for signs and symptoms of urinary retention (e.g., difficulty passing urine, painful urination), especially in patients with prostatic hyperplasia or bladder-neck obstruction. Instruct patients to consult a physician immediately should any of these signs or symptoms develop.

### **5.6 Renal Impairment**

As a predominantly renally excreted drug, patients with moderate to severe renal impairment (creatinine clearance of <60 mL/min) treated with tiotropium bromide inhalation powder should be monitored closely for anticholinergic side effects [*see Clinical Pharmacology (12.3)*].

## **6 ADVERSE REACTIONS**

The following adverse reactions are described, or described in greater detail, in other sections:

- Immediate hypersensitivity reactions [*see Warnings and Precautions (5.2)*]
- Paradoxical bronchospasm [*see Warnings and Precautions (5.3)*]

- Worsening of narrow-angle glaucoma [*see Warnings and Precautions (5.4)*]
- Worsening of urinary retention [*see Warnings and Precautions (5.5)*]

## **6.1 Clinical Trials Experience**

Because clinical trials are conducted under widely varying conditions, the incidence of adverse reactions observed in the clinical trials of a drug cannot be directly compared to the incidences in the clinical trials of another drug and may not reflect the incidences observed in practice.

### *6-Month to 1-Year Trials*

The data described below reflect exposure to tiotropium bromide inhalation powder in 2,663 patients. Tiotropium bromide inhalation powder was studied in two 1-year placebo-controlled trials, two 1-year active-controlled trials, and two 6-month placebo-controlled trials in patients with COPD. In these trials, 1,308 patients were treated with tiotropium bromide inhalation powder at the recommended dosage of 18 mcg once a day. The population had an age ranging from 39 to 87 years with 65% to 85% males, 95% Caucasian, and had COPD with a mean pre-bronchodilator forced expiratory volume in one second (FEV<sub>1</sub>) percent predicted of 39% to 43%. Patients with narrow-angle glaucoma, or symptomatic prostatic hypertrophy or bladder outlet obstruction were excluded from these trials. An additional 6-month trial conducted in a Veteran's Affairs setting is not included in this safety database because only serious adverse events were collected.

The most commonly reported adverse drug reaction was dry mouth. Dry mouth was usually mild and often resolved during continued treatment. Other reactions reported in individual patients and consistent with possible anticholinergic effects included constipation, tachycardia, blurred vision, glaucoma (new onset or worsening), dysuria, and urinary retention.

Four multicenter, 1-year, placebo-controlled and active-controlled trials evaluated tiotropium bromide inhalation powder in patients with COPD. Table 1 shows all adverse reactions that occurred with a frequency of  $\geq 3\%$  in the tiotropium bromide inhalation powder group in the 1-year placebo-controlled trials where the rates in the tiotropium bromide inhalation powder group exceeded placebo by  $\geq 1\%$ . The frequency of corresponding reactions in the ipratropium-controlled trials is included for comparison.

**Table 1: Adverse Reactions (% Patients) in One-Year COPD Clinical Trials**

<b>Body System (Event)</b>	<b>Placebo-Controlled Trials</b>		<b>Ipratropium-Controlled Trials</b>	
	<b>Tiotropium Bromide Inhalation Powder (n = 550)</b>	<b>Placebo (n = 371)</b>	<b>Tiotropium Bromide Inhalation Powder (n = 356)</b>	<b>Ipratropium (n = 179)</b>
<b>Body as a Whole</b>				
Chest Pain (non-specific)	7	5	5	2
Edema, Dependent	5	4	3	5
<b>Gastrointestinal System Disorders</b>				
Dry Mouth	16	3	12	6
Dyspepsia	6	5	1	1
Abdominal Pain	5	3	6	6
Constipation	4	2	1	1
Vomiting	4	2	1	2
<b>Musculoskeletal System</b>				
Myalgia	4	3	4	3
<b>Resistance Mechanism Disorders</b>				
Infection	4	3	1	3
Moniliasis	4	2	3	2
<b>Respiratory System (Upper)</b>				
Upper Respiratory Tract Infection	41	37	43	35
Sinusitis	11	9	3	2
Pharyngitis	9	7	7	3
Rhinitis	6	5	3	2
Epistaxis	4	2	1	1
<b>Skin and Appendage Disorders</b>				
Rash	4	2	2	2
<b>Urinary System</b>				
Urinary Tract Infection	7	5	4	2

Arthritis, coughing, and influenza-like symptoms occurred at a rate of  $\geq 3\%$  in the tiotropium bromide inhalation powder treatment group, but were  $< 1\%$  in excess of the placebo group.

Other reactions that occurred in the tiotropium bromide inhalation powder group at a frequency of 1% to 3% in the placebo-controlled trials where the rates exceeded that in the placebo group include: *Body as a Whole*: allergic reaction, leg pain; *Central and Peripheral Nervous System*: dysphonia, paresthesia; *Gastrointestinal System Disorders*: gastrointestinal disorder not otherwise specified (NOS), gastroesophageal reflux, stomatitis (including ulcerative stomatitis); *Metabolic and Nutritional Disorders*: hypercholesterolemia, hyperglycemia; *Musculoskeletal System Disorders*: skeletal pain; *Cardiac Events*: angina pectoris (including aggravated angina pectoris); *Psychiatric Disorder*: depression; *Infections*: herpes zoster; *Respiratory System Disorder (Upper)*:

laryngitis; *Vision Disorder*: cataract. In addition, among the adverse reactions observed in the clinical trials with an incidence of <1% were atrial fibrillation, supraventricular tachycardia, angioedema, and urinary retention.

In the 1-year trials, the incidence of dry mouth, constipation, and urinary tract infection increased with age [*see Use in Specific Populations (8.5)*].

Two multicenter, 6-month, controlled studies evaluated tiotropium bromide inhalation powder in patients with COPD. The adverse reactions and the incidence rates were similar to those seen in the 1-year controlled trials.

#### *4-Year Trial*

The data described below reflect exposure to tiotropium bromide inhalation powder in 5,992 COPD patients in a 4-year placebo-controlled trial. In this trial, 2,986 patients were treated with tiotropium bromide inhalation powder at the recommended dosage of 18 mcg once a day. The population had an age range from 40 to 88 years, was 75% male, 90% Caucasian, and had COPD with a mean pre-bronchodilator FEV<sub>1</sub> percent predicted of 40%. Patients with narrow-angle glaucoma, or symptomatic prostatic hypertrophy or bladder outlet obstruction were excluded from these trials. When the adverse reactions were analyzed with a frequency of  $\geq 3\%$  in the tiotropium bromide inhalation powder group where the rates in the tiotropium bromide inhalation powder group exceeded placebo by  $\geq 1\%$ , adverse reactions included (tiotropium bromide inhalation powder, placebo): pharyngitis (12.5%, 10.8%), sinusitis (6.5%, 5.3%), headache (5.7%, 4.5%), constipation (5.1%, 3.7%), dry mouth (5.1%, 2.7%), depression (4.4%, 3.3%), insomnia (4.4%, 3.0%), and arthralgia (4.2%, 3.1%).

#### *Additional Adverse Reactions*

Other adverse reactions not previously listed that were reported more frequently in COPD patients treated with tiotropium bromide inhalation powder than placebo include:

dehydration, skin ulcer, stomatitis, gingivitis, oropharyngeal candidiasis, dry skin, skin infection, and joint swelling.

## **6.2 Postmarketing Experience**

Adverse reactions have been identified during worldwide post-approval use of tiotropium bromide inhalation powder. Because these reactions are reported voluntarily from a population of uncertain size, it is not always possible to reliably estimate their frequency or establish a causal relationship to drug exposure. These adverse reactions are: application site irritation (glossitis, mouth ulceration, and pharyngolaryngeal pain), dizziness, dysphagia, hoarseness, intestinal obstruction including ileus paralytic, intraocular pressure increased, oral candidiasis, palpitations, pruritus, tachycardia, throat irritation, and urticaria.

## **7 DRUG INTERACTIONS**

### **7.1 Sympathomimetics, Methylxanthines, Steroids**

Tiotropium bromide inhalation powder has been used concomitantly with short-acting and long-acting sympathomimetic (beta-agonists) bronchodilators, methylxanthines, and oral and inhaled steroids without increases in adverse reactions.



## 7.2 Anticholinergics

There is potential for an additive interaction with concomitantly used anticholinergic medications. Therefore, avoid coadministration of tiotropium bromide inhalation powder with other anticholinergic-containing drugs as this may lead to an increase in anticholinergic adverse effects [see *Warnings and Precautions* (5.4, 5.5) and *Adverse Reactions* (6)].

## 8 USE IN SPECIFIC POPULATIONS

### 8.1 Pregnancy

#### Risk Summary

The limited human data with tiotropium bromide inhalation powder use during pregnancy are insufficient to inform a drug-associated risk of adverse pregnancy-related outcomes. Based on animal reproduction studies, no structural abnormalities were observed when tiotropium was administered by inhalation to pregnant rats and rabbits during the period of organogenesis at doses 790 and 8 times, respectively, the maximum recommended human daily inhalation dose (MRHDID). Increased post-implantation loss was observed in rats and rabbits administered tiotropium at maternally toxic doses 430 times and 40 times the MRHDID, respectively [see *Data*].

The estimated background risk of major birth defects and miscarriage for the indicated population is unknown. All pregnancies have a background risk of birth defect, loss or other adverse outcomes. In the U.S. general population, the estimated background risk of major birth defects and miscarriage in clinically recognized pregnancies is 2% to 4% and 15% to 20%, respectively.

#### Data

##### *Animal Data*

In 2 separate embryo-fetal development studies, pregnant rats and rabbits received tiotropium during the period of organogenesis at doses up to approximately 790 and 8 times the MRHDID, respectively (on a mcg/m<sup>2</sup> basis at inhalation doses of 1,471 and 7 mcg/kg/day in rats and rabbits, respectively). No evidence of structural abnormalities was observed in rats or rabbits. However, in rats, tiotropium caused fetal resorption, litter loss, decreases in the number of live pups at birth and the mean pup weights, and a delay in pup sexual maturation at tiotropium doses of approximately 40 times the MRHDID (on a mcg/m<sup>2</sup> basis at a maternal inhalation dose of 78 mcg/kg/day). In rabbits, tiotropium caused an increase in post-implantation loss at a tiotropium dose of approximately 430 times the MRHDID (on a mcg/m<sup>2</sup> basis at a maternal inhalation dose of 400 mcg/kg/day). Such effects were not observed at approximately 5 and 95 times the MRHDID, respectively (on a mcg/m<sup>2</sup> basis at inhalation doses of 9 and 88 mcg/kg/day in rats and rabbits, respectively).

### 8.2 Lactation

#### Risk Summary

There are no data on the presence of tiotropium in human milk, the effects on the breastfed infant, or the effects on milk production. Tiotropium is present in milk of lactating rats; however, due to species-specific differences in lactation physiology, the clinical relevance of these data are not clear [see *Data*]. The developmental and health benefits of breastfeeding should be considered along with the mother's clinical need for tiotropium bromide inhalation powder and any potential

adverse effects on the breastfed child from tiotropium bromide inhalation powder or from the underlying maternal condition.

#### Data

The distribution of tiotropium bromide into milk was investigated after a single intravenous administration of 10 mg/kg to lactating rats. Tiotropium and/or its metabolites are present in the milk of lactating rats at concentrations above those in plasma.

### **8.4 Pediatric Use**

Tiotropium bromide inhalation powder is not indicated for use in children. The safety and effectiveness of tiotropium bromide inhalation powder in pediatric patients have not been established.

### **8.5 Geriatric Use**

Based on available data, no adjustment of tiotropium bromide inhalation powder dosage in geriatric patients is warranted [*see Clinical Pharmacology (12.3)*].

Of the total number of patients who received tiotropium bromide inhalation powder in the 1-year clinical trials, 426 were <65 years, 375 were 65 to 74 years, and 105 were ≥75 years of age. Within each age subgroup, there were no differences between the proportion of patients with adverse events in the tiotropium bromide inhalation powder and the comparator groups for most events. Dry mouth increased with age in the tiotropium bromide inhalation powder group (differences from placebo were 9.0%, 17.1%, and 16.2% in the aforementioned age subgroups). A higher frequency of constipation and urinary tract infections with increasing age was observed in the tiotropium bromide inhalation powder group in the placebo-controlled studies. The differences from placebo for constipation were 0%, 1.8%, and 7.8% for each of the age groups. The differences from placebo for urinary tract infections were -0.6%, 4.6%, and 4.5%. No overall differences in effectiveness were observed among these groups.

### **8.6 Renal Impairment**

Patients with moderate to severe renal impairment (creatinine clearance of <60 mL/min) treated with tiotropium bromide inhalation powder should be monitored closely for anticholinergic side effects [*see Dosage and Administration (2), Warnings and Precautions (5.6), and Clinical Pharmacology (12.3)*].

### **8.7 Hepatic Impairment**

The effects of hepatic impairment on the pharmacokinetics of tiotropium were not studied.

## **10 OVERDOSAGE**

High doses of tiotropium may lead to anticholinergic signs and symptoms. However, there were no systemic anticholinergic adverse effects following a single inhaled dose of up to 282 mcg tiotropium in 6 healthy volunteers. In a study of 12 healthy volunteers, bilateral conjunctivitis and dry mouth were seen following repeated once- daily inhalation of 141 mcg of tiotropium.

Treatment of overdosage consists of discontinuation of tiotropium bromide inhalation powder together with institution of appropriate symptomatic and/or supportive therapy.

### Accidental Ingestion

**Acute intoxication by inadvertent oral ingestion of tiotropium bromide inhalation powder capsules is unlikely since it is not well-absorbed systemically.**

A case of overdose has been reported from postmarketing experience. A female patient was reported to have inhaled 30 capsules over a 2.5 day period, and developed altered mental status, tremors, abdominal pain, and severe constipation. The patient was hospitalized, tiotropium bromide inhalation powder was discontinued, and the constipation was treated with an enema. The patient recovered and was discharged on the same day.

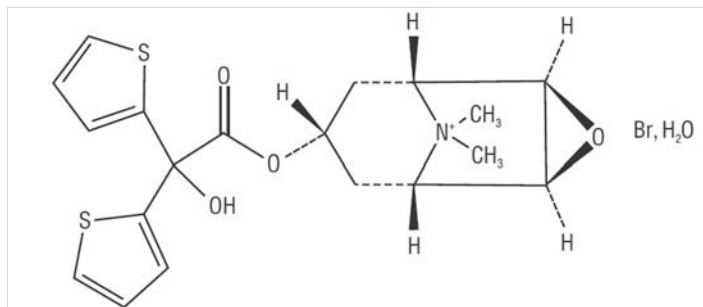
## 11 DESCRIPTION

Tiotropium bromide inhalation powder consists of tiotropium bromide inhalation powder capsules and a LupinHaler device. Each white opaque, hypromellose tiotropium bromide inhalation powder capsule contains a dry powder consisting of 18 mcg tiotropium (equivalent to 22.5 mcg tiotropium bromide monohydrate USP) blended with lactose monohydrate (which may contain milk proteins).

The contents of tiotropium bromide inhalation powder capsules are intended for oral inhalation only, and are intended for administration only with the LupinHaler device.

The active component of tiotropium bromide inhalation powder is tiotropium. The drug substance, tiotropium bromide monohydrate, is an anticholinergic with specificity for muscarinic receptors. It is chemically described as (1 $\alpha$ , 2 $\beta$ , 4 $\beta$ , 5 $\alpha$ , 7 $\beta$ )-7-[(Hydroxydi-2-thienylacetyl)oxy]-9,9-dimethyl-3-oxa-9-azoniatricyclo [3.3.1.0<sup>2,4</sup>] nonane bromide monohydrate. It is a synthetic, non-chiral, quaternary ammonium compound. Tiotropium bromide is a white or yellowish white powder. It is sparingly soluble in water and soluble in methanol.

The structural formula is:



Tiotropium bromide (monohydrate) has a molecular mass of 490.4 and a molecular formula of C<sub>19</sub>H<sub>22</sub>NO<sub>4</sub>S<sub>2</sub>Br • H<sub>2</sub>O.

The LupinHaler device is an inhalation device used to inhale the dry powder contained in the tiotropium bromide inhalation powder capsule. The dry powder is delivered from the LupinHaler device at flow rates as low as 20 L/min. Under standardized *in vitro* testing, the LupinHaler device delivers a mean of 10.4 mcg tiotropium when tested at a flow rate of 39 L/min for 3.1 seconds (2 L total). In a study of 26 adult patients with COPD and severely

compromised lung function [mean FEV<sub>1</sub> 1.02 L (range 0.45 to 2.24 L); 37.6% of predicted (range 16% to 65%)], the median peak inspiratory flow (PIF) through the LupinHaler device was 30.0 L/min (range 20.4 to 45.6 L/min). The amount of drug delivered to the lungs will vary depending on patient factors such as inspiratory flow and peak inspiratory flow through the LupinHaler device, which may vary from patient to patient, and may vary with the exposure time of the tiotropium bromide inhalation powder capsule outside the blister pack.

## **12 CLINICAL PHARMACOLOGY**

### **12.1 Mechanism of Action**

Tiotropium is a long-acting, antimuscarinic agent, which is often referred to as an anticholinergic. It has similar affinity to the subtypes of muscarinic receptors, M<sub>1</sub> to M<sub>5</sub>. In the airways, it exhibits pharmacological effects through inhibition of M<sub>3</sub>-receptors at the smooth muscle leading to bronchodilation. The competitive and reversible nature of antagonism was shown with human and animal origin receptors and isolated organ preparations. In preclinical *in vitro* as well as *in vivo* studies, prevention of methacholine-induced bronchoconstriction effects was dose-dependent and lasted longer than 24 hours. The bronchodilation following inhalation of tiotropium is predominantly a site-specific effect.

### **12.2 Pharmacodynamics**

#### Cardiac Electrophysiology

In a multicenter, randomized, double-blind trial using tiotropium dry powder for inhalation that enrolled 198 patients with COPD, the number of subjects with changes from baseline-corrected QT interval of 30 to 60 msec was higher in the tiotropium bromide inhalation powder group as compared with placebo. This difference was apparent using both the Bazett (QTcB) [20 (20%) patients vs. 12 (12%) patients] and Fredericia (QTcF) [16 (16%) patients vs. 1 (1%) patient] corrections of QT for heart rate. No patients in either group had either QTcB or QTcF of >500 msec. Other clinical studies with tiotropium bromide inhalation powder did not detect an effect of the drug on QTc intervals.

The effect of tiotropium dry powder for inhalation on QT interval was also evaluated in a randomized, placebo- and positive-controlled crossover study in 53 healthy volunteers. Subjects received tiotropium dry powder for inhalation 18 mcg, 54 mcg (3 times the recommended dose), or placebo for 12 days. ECG assessments were performed at baseline and throughout the dosing interval following the first and last dose of study medication. Relative to placebo, the maximum mean change from baseline in study-specific QTc interval was 3.2 msec and 0.8 msec for tiotropium dry powder for inhalation 18 mcg and 54 mcg, respectively. No subject showed a new onset of QTc >500 msec or QTc changes from baseline of ≥60 msec.

### **12.3 Pharmacokinetics**

Tiotropium is administered by dry powder inhalation. Some of the pharmacokinetic data described below were obtained with higher doses than recommended for therapy. A dedicated pharmacokinetic study in patients with COPD evaluating once-daily tiotropium delivered from the RESPIMAT inhaler (5 mcg) and as inhalation powder (18 mcg) from the LupinHaler device resulted in a similar systemic exposure between the two products.

### Absorption

Following dry powder inhalation by young healthy volunteers, the absolute bioavailability of 19.5% suggests that the fraction reaching the lung is highly bioavailable. Oral solutions of tiotropium have an absolute bioavailability of 2-3%. Food is not expected to influence the absorption of tiotropium. Maximum tiotropium plasma concentrations were observed 7 minutes after inhalation.

### Distribution

Tiotropium is 72% bound to plasma protein and had a volume of distribution of 32 L/kg after intravenous administration to young healthy volunteers. Local concentrations in the lung are not known, but the mode of administration suggests substantially higher concentrations in the lung. Studies in rats have shown that tiotropium does not readily penetrate the blood-brain barrier.

### Elimination

The terminal half-life of tiotropium in COPD patients following once daily inhalation of 5 mcg tiotropium was approximately 25 hours. Total clearance was 880 mL/min after intravenous administration in young healthy volunteers. After chronic once-daily dry powder inhalation by COPD patients, pharmacokinetic steady state was reached by day 7 with no accumulation thereafter.

### *Metabolism*

The extent of metabolism is small. This is evident from a urinary excretion of 74% of unchanged substance after an intravenous dose to young healthy volunteers. Tiotropium, an ester, is nonenzymatically cleaved to the alcohol N-methylscopine and dithienylglycolic acid, neither of which binds to muscarinic receptors.

*In vitro* experiments with human liver microsomes and human hepatocytes suggest that a fraction of the administered dose (74% of an intravenous dose is excreted unchanged in the urine, leaving 25% for metabolism) is metabolized by cytochrome P450-dependent oxidation and subsequent glutathione conjugation to a variety of Phase II metabolites. This enzymatic pathway can be inhibited by CYP450 2D6 and 3A4 inhibitors, such as quinidine, ketoconazole, and gestodene. Thus, CYP450 2D6 and 3A4 are involved in the metabolic pathway that is responsible for the elimination of a small part of the administered dose. *In vitro* studies using human liver microsomes showed that tiotropium in supra-therapeutic concentrations did not inhibit CYP450 1A1, 1A2, 2B6, 2C9, 2C19, 2D6, 2E1, or 3A4.

### *Excretion*

Intravenously administered tiotropium bromide is mainly excreted unchanged in urine (74%). After dry powder inhalation to COPD patients at steady state, urinary excretion was 7% (1.3 mcg) of the unchanged dose over 24 hours. The renal clearance of tiotropium exceeds the creatinine clearance, indicating secretion into the urine.

### Specific Populations

#### *Geriatric Patients*

As expected for all predominantly renally excreted drugs, advancing age was associated with a decrease of tiotropium renal clearance (365 mL/min in COPD patients <65 years to 271 mL/min in COPD patients ≥65 years). This did not result in a corresponding increase in AUC<sub>0-6,ss</sub> and C<sub>max,ss</sub> values following administration via LupinHaler device.

#### *Renal Impairment*

Following 4-week tiotropium bromide inhalation powder or SPIRIVA RESPIMAT<sup>®</sup> once daily dosing in patients with COPD, mild renal impairment (creatinine clearance 60-<90 mL/min) resulted in 6-23% higher AUC<sub>0-6,ss</sub> and 6-17% higher C<sub>max,ss</sub> values; moderate renal impairment (creatinine clearance 30-<60 mL/min) resulted in 54-57% higher AUC<sub>0-6,ss</sub> and 15-31% higher C<sub>max,ss</sub> values compared to COPD patients with normal renal function (creatinine clearance ≥90 mL/min). There is insufficient data for tiotropium exposure in patients with severe renal impairment (creatinine clearance <30 mL/min) following inhalation of tiotropium bromide inhalation powder or SPIRIVA RESPIMAT<sup>®</sup>. However AUC<sub>0-4</sub> and C<sub>max</sub> were 94% and 52% higher, respectively, in patients with severe renal impairment following intravenous infusion of tiotropium bromide.

#### *Hepatic Impairment*

The effects of hepatic impairment on the pharmacokinetics of tiotropium were not studied.

#### Drug Interactions

An interaction study with tiotropium (14.4 mcg intravenous infusion over 15 minutes) and cimetidine 400 mg three times daily or ranitidine 300 mg once daily was conducted. Concomitant administration of cimetidine with tiotropium resulted in a 20% increase in the AUC<sub>0-4h</sub>, a 28% decrease in the renal clearance of tiotropium and no significant change in the C<sub>max</sub> and amount excreted in urine over 96 hours. Co-administration of tiotropium with ranitidine did not affect the pharmacokinetics of tiotropium.

Common concomitant medications (long-acting beta2-adrenergic agonists (LABA), inhaled corticosteroids (ICS)) used by patients with COPD were not found to alter the exposure to tiotropium.

### **13 NONCLINICAL TOXICOLOGY**

#### **13.1 Carcinogenesis, Mutagenesis, Impairment of Fertility**

No evidence of tumorigenicity was observed in a 104-week inhalation study in rats at tiotropium doses up to 59 mcg/kg/day, in an 83-week inhalation study in female mice at doses up to 145 mcg/kg/day, and in a 101-week inhalation study in male mice at doses up to 2 mcg/kg/day. These doses correspond to approximately 30, 40, and 0.5 times the recommended human daily inhalation dose (MRHDID) on a mcg/m<sup>2</sup> basis, respectively.

Tiotropium bromide demonstrated no evidence of mutagenicity or clastogenicity in the following assays: the bacterial gene mutation assay, the V79 Chinese hamster cell mutagenesis assay, the chromosomal aberration assays in human lymphocytes *in vitro* and mouse micronucleus formation *in vivo*, and the unscheduled DNA synthesis in primary rat hepatocytes *in vitro* assay.

In rats, decreases in the number of corpora lutea and the percentage of implants were noted at inhalation tiotropium doses of 78 mcg/kg/day or greater (approximately 40 times the MRHDID on a mcg/m<sup>2</sup> basis). No such effects were observed at 9 mcg/kg/day (approximately 5 times the MRHDID on a mcg/m<sup>2</sup> basis). The fertility index, however, was not affected at inhalation doses up to 1,689 mcg/kg/day (approximately 910 times the MRHDID on a mcg/m<sup>2</sup> basis).

## 14 CLINICAL STUDIES

The tiotropium bromide inhalation powder clinical development program consisted of six Phase 3 studies in 2,663 patients with COPD (1,308 receiving tiotropium bromide inhalation powder): two 1-year, placebo-controlled studies, two 6-month, placebo-controlled studies and two 1-year, ipratropium-controlled studies. These studies enrolled patients who had a clinical diagnosis of COPD, were 40 years of age or older, had a history of smoking greater than 10 pack-years, had a forced expiratory volume in one second (FEV<sub>1</sub>) less than or equal to 60% or 65% of predicted, and a ratio of FEV<sub>1</sub>/FVC of less than or equal to 0.7.

In these studies, tiotropium bromide inhalation powder, administered once-daily in the morning, provided improvement in lung function (FEV<sub>1</sub>), with peak effect occurring within 3 hours following the first dose.

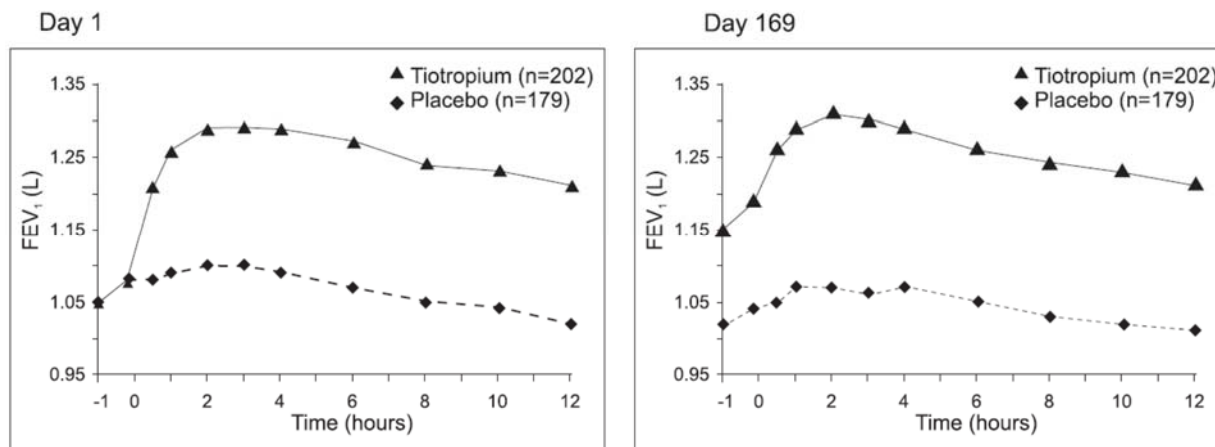
Two additional trials evaluated exacerbations: a 6-month, randomized, double-blind, placebo-controlled, multicenter clinical trial of 1,829 COPD patients in a US Veterans Affairs setting and a 4-year, randomized, double-blind, placebo-controlled, multicenter, clinical trial of 5,992 COPD patients. Long-term effects on lung function and other outcomes, were also evaluated in the 4-year multicenter trial.

### *6-Month to 1-Year Effects on Lung Function*

In the 1-year, placebo-controlled trials, the mean improvement in FEV<sub>1</sub> at 30 minutes was 0.13 liters (13%) with a peak improvement of 0.24 liters (24%) relative to baseline after the first dose (Day 1). Further improvements in FEV<sub>1</sub> and forced vital capacity (FVC) were observed with pharmacodynamic steady state reached by Day 8 with once-daily treatment. The mean peak improvement in FEV<sub>1</sub>, relative to baseline, was 0.28 to 0.31 liters (28% to 31%), after 1 week (Day 8) of once-daily treatment. Improvement of lung function was maintained for 24 hours after a single dose and consistently maintained over the 1-year treatment period with no evidence of tolerance.

In the two 6-month, placebo-controlled trials, serial spirometric evaluations were performed throughout daytime hours in Trial A (12 hours) and limited to 3 hours in Trial B. The serial FEV<sub>1</sub> values over 12 hours (Trial A) are displayed in Figure 1. These trials further support the improvement in pulmonary function (FEV<sub>1</sub>) with tiotropium bromide inhalation powder, which persisted over the spirometric observational period. Effectiveness was maintained for 24 hours after administration over the 6-month treatment period.

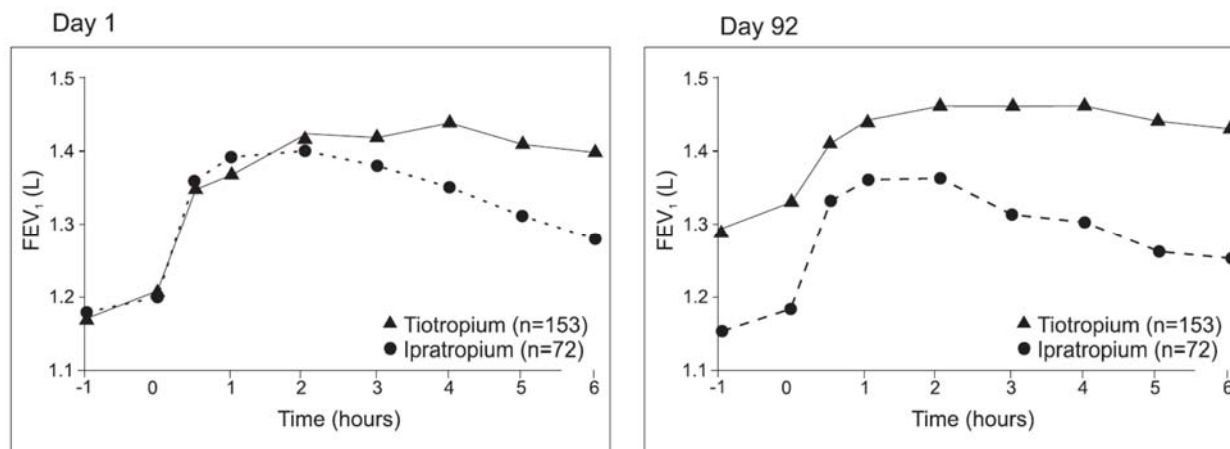
**Figure 1: Mean FEV<sub>1</sub> Over Time (prior to and after administration of study drug) on Days 1 and 169 for Trial A (a Six-Month Placebo-Controlled Study)\***



\*Means adjusted for center, treatment, and baseline effect. On Day 169, a total of 183 and 149 patients in the tiotropium bromide inhalation powder and placebo groups, respectively, completed the trial. The data for the remaining patients were imputed using the last observation or least favorable observation carried forward.

Results of each of the 1-year ipratropium-controlled trials were similar to the results of the 1-year placebo-controlled trials. The results of one of these trials are shown in Figure 2.

**Figure 2: Mean FEV<sub>1</sub> Over Time (0 to 6 hours post-dose) on Days 1 and 92, Respectively for One of the Two Ipratropium-Controlled Studies\***



\*Means adjusted for center, treatment, and baseline effect. On Day 92 (primary endpoint), a total of 151 and 69 patients in the tiotropium bromide inhalation powder and ipratropium groups, respectively, completed through 3 months of observation. The data for the remaining patients were imputed using the last observation or least favorable observation carried forward.

A randomized, placebo-controlled clinical study in 105 patients with COPD demonstrated that bronchodilation was maintained throughout the 24-hour dosing interval in comparison to placebo,



regardless of whether tiotropium bromide inhalation powder was administered in the morning or in the evening.

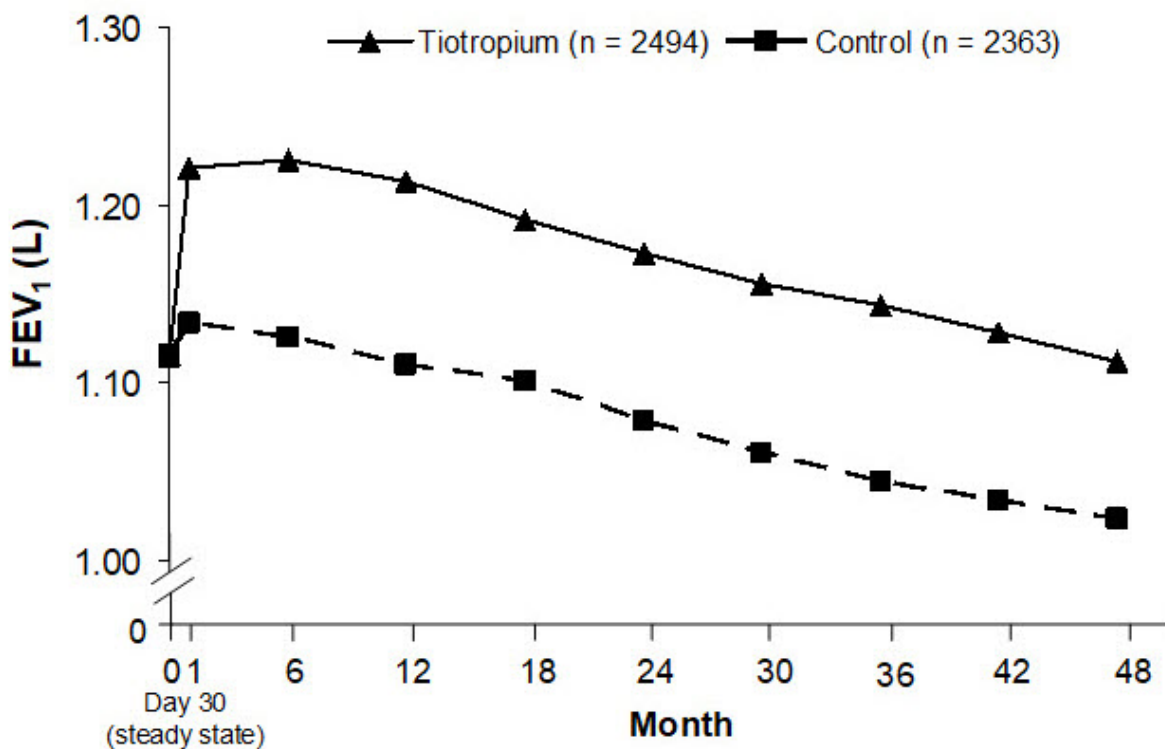
Throughout each week of the 1-year treatment period in the two placebo-controlled trials, patients taking tiotropium bromide inhalation powder had a reduced requirement for the use of rescue short-acting beta<sub>2</sub>-agonists. Reduction in the use of rescue short-acting beta<sub>2</sub>-agonists, as compared to placebo, was demonstrated in one of the two 6-month studies.

#### *4-Year Effects on Lung Function*

A 4-year, randomized, double-blind, placebo-controlled, multicenter clinical trial involving 5,992 COPD patients was conducted to evaluate the long-term effects of tiotropium bromide inhalation powder on disease progression (rate of decline in FEV<sub>1</sub>). Patients were permitted to use all respiratory medications (including short-acting and long-acting beta-agonists, inhaled and systemic steroids, and theophyllines) other than inhaled anticholinergics. The patients were 40 to 88 years of age, 75% male, and 90% Caucasian with a diagnosis of COPD and a mean pre-bronchodilator FEV<sub>1</sub> of 39% predicted (range = 9% to 76%) at study entry. There was no difference between the groups in either of the co-primary efficacy endpoints, yearly rate of decline in pre- and post-bronchodilator FEV<sub>1</sub>, as demonstrated by similar slopes of FEV<sub>1</sub> decline over time (Figure 3).

Tiotropium bromide inhalation powder maintained improvements in trough (pre-dose) FEV<sub>1</sub> (adjusted means over time: 87 to 103 mL) throughout the 4 years of the study (Figure 3).

**Figure 3: Trough (pre-dose) FEV<sub>1</sub> Mean Values at Each Time Point**



Repeated measure ANOVA was used to estimate means. Means are adjusted for baseline measurements. Baseline trough FEV<sub>1</sub> (observed mean) = 1.12. Patients with  $\geq 3$  acceptable pulmonary function tests after Day 30 and non-missing baseline value were included in the analysis.

### *Exacerbations*

The effect of tiotropium bromide inhalation powder on COPD exacerbations was evaluated in two clinical trials: a 4-year clinical trial described above and a 6-month clinical trial of 1,829 COPD patients in a Veterans Affairs setting. In the 6-month trial, COPD exacerbations were defined as a complex of respiratory symptoms (increase or new onset) of more than one of the following: cough, sputum, wheezing, dyspnea, or chest tightness with a duration of at least 3 days requiring treatment with antibiotics, systemic steroids, or hospitalization. The population had an age ranging from 40 to 90 years with 99% males, 91% Caucasian, and had COPD with a mean pre-bronchodilator FEV<sub>1</sub> percent predicted of 36% (range = 8% to 93%). Patients were permitted to use respiratory medications (including short-acting and long-acting beta-agonists, inhaled and systemic steroids, and theophyllines) other than inhaled anticholinergics. In the 6-month trial, the co-primary endpoints were the proportion of patients with COPD exacerbation and the proportion of patients with hospitalization due to COPD exacerbation. Tiotropium bromide inhalation powder significantly reduced the proportion of COPD patients who experienced exacerbations compared to placebo (27.9% vs. 32.3%, respectively; Odds Ratio (OR) (tiotropium/placebo) = 0.81; 95% CI = 0.66, 0.99;  $p = 0.037$ ). The proportion of patients with hospitalization due to COPD exacerbations in patients who used tiotropium bromide inhalation powder compared to placebo was 7.0% vs. 9.5%, respectively; OR = 0.72; 95% CI = 0.51, 1.01;  $p = 0.056$ .

Exacerbations were evaluated as a secondary outcome in the 4-year multicenter trial. In this trial, COPD exacerbations were defined as an increase or new onset of more than one of the following respiratory symptoms (cough, sputum, sputum purulence, wheezing, dyspnea) with a duration of three or more days requiring treatment with antibiotics and/or systemic (oral, intramuscular, or intravenous) steroids. Tiotropium bromide inhalation powder significantly reduced the risk of an exacerbation by 14% (Hazard Ratio (HR) = 0.86; 95% CI = 0.81, 0.91;  $p < 0.001$ ) and reduced the risk of exacerbation-related hospitalization by 14% (HR = 0.86; 95% CI = 0.78, 0.95;  $p < 0.002$ ) compared to placebo. The median time to first exacerbation was delayed from 12.5 months (95% CI = 11.5, 13.8) in the placebo group to 16.7 months (95% CI = 14.9, 17.9) in the tiotropium bromide inhalation powder group.

### *All-Cause Mortality*

In the 4-year placebo-controlled lung-function trial described above, all-cause mortality compared to placebo was assessed. There were no significant differences in all-cause mortality rates between tiotropium bromide inhalation powder and placebo.

The all-cause mortality of tiotropium bromide inhalation powder was also compared to tiotropium inhalation spray 5 mcg (SPIRIVA RESPIMAT® 5 mcg) in an additional long-term, randomized, double-blind, double-dummy active-controlled study with an observation period up to 3 years. All-cause mortality was similar between tiotropium bromide inhalation powder and SPIRIVA RESPIMAT®.

## 16 HOW SUPPLIED/STORAGE AND HANDLING

Tiotropium bromide inhalation powder consists of tiotropium bromide inhalation powder capsules and the LupinHaler device. Tiotropium bromide inhalation powder capsules contain 18 mcg of tiotropium (equivalent to 22.5 mcg tiotropium bromide monohydrate USP) in a hypromellose capsule with white opaque cap and white opaque body, imprinted with “LU” on cap and “T18” on body.

The LupinHaler device is a white colour inhaler with a green piercing button. It is also imprinted with LupinHaler, Tiotropium Bromide Inhalation Powder and the LUPIN company Logo. It is also imprinted to indicate that Tiotropium Bromide Inhalation Powder Capsules should not be stored in the LupinHaler device and that the LupinHaler device is only to be used with Tiotropium Bromide Inhalation Powder Capsules.

Tiotropium bromide inhalation powder capsules are packaged in an aluminum/aluminum blister card and joined along a perforated-cut line. Tiotropium bromide inhalation powder capsules should always be stored in the blister and only removed immediately before use. The drug should be used immediately after the packaging over an individual tiotropium bromide inhalation powder capsule is opened.

The following packages are available:

- carton (NDC 68180-964-12) containing 30 Tiotropium Bromide Inhalation Powder Capsules (3 unit-dose blister cards NDC 68180-964-11) and 1 LupinHaler inhalation device

Keep out of reach of children. Do not get powder into eyes.

### *Storage*

Store at 20°C to 25°C (68°F to 77°F); excursions permitted to 15°C to 30°C (59°F to 86°F) [see USP Controlled Room Temperature].

The Tiotropium Bromide Inhalation Powder Capsules should not be exposed to extreme temperature or moisture. Do not store Tiotropium Bromide Inhalation Powder Capsules in the LupinHaler device.

## 17 PATIENT COUNSELING INFORMATION

Advise the patient to read the FDA-approved patient labeling (Patient Information and Instructions for Use).

### Not for Acute Use:

Instruct patients that tiotropium bromide inhalation powder is a once-daily maintenance bronchodilator and should not be used for immediate relief of breathing problems (i.e., as a rescue medication).

### Immediate Hypersensitivity Reactions:

Inform patients that anaphylaxis, angioedema (including swelling of the lips, tongue, or throat), urticaria, rash, bronchospasm, or itching, may occur after administration of tiotropium bromide

inhalation powder. Advise patient to immediately discontinue treatment and consult a physician should any of these signs or symptoms develop.

Paradoxical Bronchospasm:

Inform patients that tiotropium bromide inhalation powder can produce paradoxical bronchospasm. Advise patients that if paradoxical bronchospasm occurs, patients should discontinue tiotropium bromide inhalation powder.

Worsening of Narrow-Angle Glaucoma:

Instruct patients to be alert for signs and symptoms of narrow-angle glaucoma (e.g., eye pain or discomfort, blurred vision, visual halos or colored images in association with red eyes from conjunctival congestion and corneal edema). Instruct patients to consult a physician immediately should any of these signs and symptoms develop.

Inform patients that care must be taken not to allow the powder to enter into the eyes as this may cause blurring of vision and pupil dilation.

Since dizziness and blurred vision may occur with the use of tiotropium bromide inhalation powder, caution patients about engaging in activities such as driving a vehicle or operating appliances or machinery.


Worsening of Urinary Retention:

Instruct patients to be alert for signs and symptoms of urinary retention (e.g., difficulty passing urine, painful urination). Instruct patients to consult a physician immediately should any of these signs or symptoms develop.

Instructions for Administering Tiotropium Bromide Inhalation Powder:

Instruct patients on how to correctly administer tiotropium bromide inhalation powder capsules using the LupinHaler device [see *Patient Counseling Information (17)*]. Instruct patients that tiotropium bromide inhalation powder capsules should only be administered via the LupinHaler device and the LupinHaler device should not be used for administering other medications. **Remind patients that the contents of tiotropium bromide inhalation powder capsules are for oral inhalation only and must not be swallowed.**

Instruct patients always to store tiotropium bromide inhalation powder capsules in sealed blisters and to remove only one tiotropium bromide inhalation powder capsule immediately before use or its effectiveness may be reduced. Instruct patients to discard unused additional tiotropium bromide inhalation powder capsules that are exposed to air (i.e., not intended for immediate use).

LUPIN and the  are registered trademarks of Lupin Pharmaceuticals, Inc.

LupinHaler<sup>®</sup> is a registered trademark of Lupin Limited.

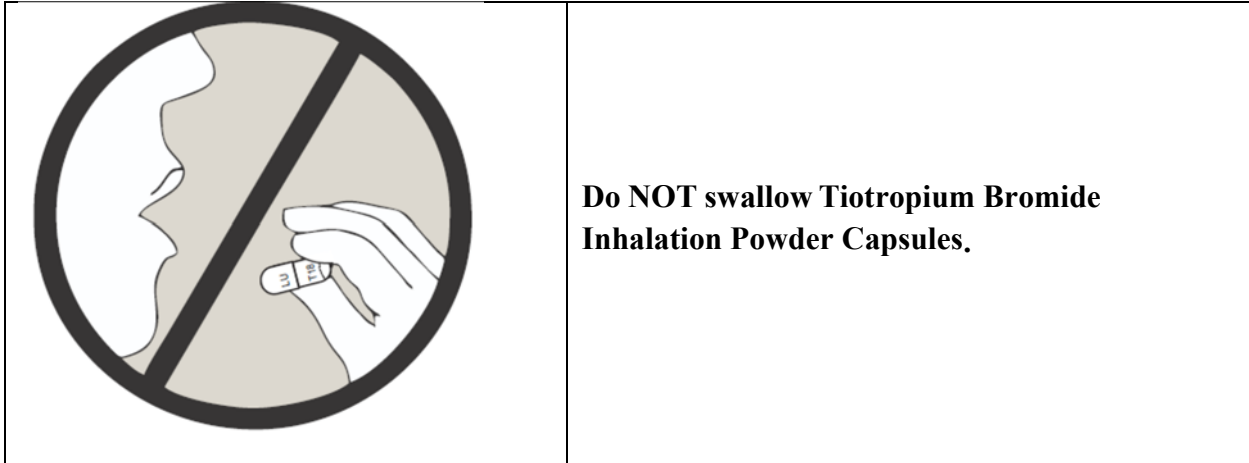
<sup>®</sup>The other brands listed are trademarks of their respective owners and are not trademarks of Lupin Pharmaceuticals, Inc. The makers of these brands are not affiliated with and do not endorse Lupin Pharmaceuticals, Inc. or its products.

Manufactured for:  
**Lupin Pharmaceuticals, Inc.**  
Naples, FL 34108  
United States

Manufactured by:  
**Lupin Limited**  
Pithampur (M.P.) - 454 775  
India

May 2025

**Patient Information**  
**Tiotropium Bromide Inhalation Powder**  
(tye-oh-TROE-pee-um BROE-mide)



**Important Information:** Do not swallow tiotropium bromide inhalation powder capsules. Tiotropium bromide inhalation powder capsules should only be used with the LupinHaler<sup>®</sup> device and inhaled through your mouth (oral inhalation).

Read the information that comes with your tiotropium bromide inhalation powder before you start using it and each time you refill your prescription. There may be new information. This leaflet does not take the place of talking with your doctor about your medical condition or your treatment.

**What is tiotropium bromide inhalation powder?**

- Tiotropium bromide inhalation powder is a prescription medicine used each day (a maintenance medicine) to control symptoms of chronic obstructive pulmonary disease (COPD), including chronic bronchitis and emphysema.
- Tiotropium bromide inhalation powder helps make your lungs work better for 24 hours. Tiotropium bromide inhalation powder relaxes your airways and helps keep them open. You may start to feel like it is easier to breathe on the first day, but it may take longer for you to feel the full effects of the medicine. Tiotropium bromide inhalation powder works best and may help make it easier to breathe when you use it every day.
- Tiotropium bromide inhalation powder reduces the likelihood of flare-ups and worsening of COPD symptoms (COPD exacerbations). A COPD exacerbation is defined as an increase or new onset of more than one COPD symptom such as cough, mucus, shortness of breath, and wheezing that requires medicine beyond your rescue medicine.

**Tiotropium bromide inhalation powder is not a rescue medicine and should not be used for treating sudden breathing problems.** Your doctor may give you other medicine to use for sudden breathing problems.

It is not known if tiotropium bromide inhalation powder is safe and effective in children.

**Who should not take tiotropium bromide inhalation powder?****Do not use tiotropium bromide inhalation powder if you:**

- are allergic to tiotropium, ipratropium (Atrovent®), or any of the ingredients in tiotropium bromide inhalation powder. See the end of this leaflet for a complete list of ingredients in tiotropium bromide inhalation powder.

Symptoms of a serious allergic reaction to tiotropium bromide inhalation powder may include:

- raised red patches on your skin (hives)
- itching
- rash
- swelling of the face, lips, tongue, and throat that may cause difficulty in breathing or swallowing

If you have these symptoms of an allergic reaction, stop taking tiotropium bromide inhalation powder and call your doctor right away or go to the nearest hospital emergency room.

**What should I tell my doctor before using tiotropium bromide inhalation powder?****Before taking tiotropium bromide inhalation powder, tell your doctor about all your medical conditions, including if you:**

- have kidney problems.
- have glaucoma. Tiotropium bromide inhalation powder may make your glaucoma worse.
- have an enlarged prostate, problems passing urine, or a blockage in your bladder. Tiotropium bromide inhalation powder may make these problems worse.
- are pregnant or plan to become pregnant. It is not known if tiotropium bromide inhalation powder could harm your unborn baby.
- are breast-feeding or plan to breast-feed. It is not known if tiotropium bromide passes into breast milk. You and your doctor will decide if tiotropium bromide inhalation powder is right for you while you breast-feed.
- have a severe allergy to milk proteins. Ask your doctor if you are not sure.

**Tell your doctor about all the medicines you take**, including prescription and non-prescription medicines and eye drops, vitamins, and herbal supplements. Some of your other medicines or supplements may affect the way tiotropium bromide inhalation powder works. Tiotropium bromide inhalation powder is an anticholinergic medicine. You should not take other anticholinergic medicines while using tiotropium bromide inhalation powder, including ipratropium. Ask your doctor or pharmacist if you are not sure if one of your medicines is an anticholinergic.

Know the medicines you take. Keep a list of your medicines with you to show your doctor and pharmacist when you get a new medicine.

**How should I take tiotropium bromide inhalation powder?**

- Use tiotropium bromide inhalation powder exactly as prescribed. Use tiotropium bromide inhalation powder one time every day.

- Read the “Instructions for Use” at the end of this leaflet before you use tiotropium bromide inhalation powder. Talk with your doctor if you do not understand the instructions.
- **Do not swallow tiotropium bromide inhalation powder capsules.**
- **Only use tiotropium bromide inhalation powder capsules with the LupinHaler device.**
- **Do not use the LupinHaler device to take any other medicine.**
- Tiotropium bromide inhalation powder comes as a powder in a tiotropium bromide inhalation powder capsule that fits the LupinHaler device. Each tiotropium bromide inhalation powder capsule, containing only a small amount of tiotropium bromide inhalation powder, is one full dose of medicine.
- Separate one blister from the blister card. Then take out one of the tiotropium bromide inhalation powder capsules from the blister package right before you use it.
- After the capsule is pierced, take a complete dose of tiotropium bromide inhalation powder by breathing in the powder by mouth two times, using the LupinHaler device (take 2 inhalations from one tiotropium bromide inhalation powder capsule). See the “**Instructions for Use**” at the end of this leaflet.
- Throw away any tiotropium bromide inhalation powder capsule that is not used right away after it is taken out of the blister package. Do not leave the tiotropium bromide inhalation powder capsules open to air; they may not work as well.
- If you miss a dose, take it as soon as you remember. Do not use tiotropium bromide inhalation powder more than one time every 24 hours.
- If you use more than your prescribed dose of tiotropium bromide inhalation powder, call your doctor or a poison control center.

#### **What should I avoid while using tiotropium bromide inhalation powder?**

- Do not let the powder from the tiotropium bromide inhalation powder capsule get into your eyes. Your vision may get blurry and the pupil in your eye may get larger (dilate). If this happens, call your doctor.
- Tiotropium bromide inhalation powder can cause dizziness and blurred vision. Should you experience these symptoms you should use caution when engaging in activities such as driving a car or operating appliances or other machines.

#### **What are the possible side effects of tiotropium bromide inhalation powder?**

**Tiotropium bromide inhalation powder can cause serious side effects, including: Allergic reaction.** Symptoms may include:

- raised red patches on your skin (hives)
- itching
- rash
- swelling of the lips, tongue, or throat that may cause difficulty in breathing or swallowing

If you have these symptoms of an allergic reaction, stop taking tiotropium bromide inhalation powder and call your doctor right away or go to the nearest hospital emergency room.

- **Sudden narrowing and blockage of the airways into the lungs (bronchospasm).** Your breathing suddenly gets worse.



If you have these symptoms of bronchospasm, stop taking tiotropium bromide inhalation powder and call your doctor right away or go to the nearest hospital emergency room.

- **New or worsened increased pressure in the eyes (acute narrow-angle glaucoma).** Symptoms of acute narrow-angle glaucoma may include:
  - eye pain
  - blurred vision
  - seeing halos (visual halos) or colored images along with red eyes

Using only eye drops to treat these symptoms may not work. If you have these symptoms, stop taking tiotropium bromide inhalation powder and call your doctor right away.

- **New or worsened urinary retention.** Symptoms of blockage in your bladder and/or enlarged prostate may include: difficulty passing urine, painful urination.

If you have these symptoms of urinary retention, stop taking tiotropium bromide inhalation powder and call your doctor right away.

Other side effects with tiotropium bromide inhalation powder include:

- upper respiratory tract infection
- dry mouth
- sinus infection
- sore throat
- non-specific chest pain
- urinary tract infection
- indigestion
- runny nose
- constipation
- increased heart rate
- blurred vision

These are not all the possible side effects with tiotropium bromide inhalation powder. Tell your doctor if you have any side effect that bothers you or that does not go away.

Call your doctor for medical advice about side effects. You may report side effects to FDA at 1-800-FDA-1088.

### **How do I store tiotropium bromide inhalation powder?**

- **Do not store tiotropium bromide inhalation powder capsules in the LupinHaler device.**
- Store tiotropium bromide inhalation powder capsules in the sealed blister package at room temperature between 68°F to 77°F (20°C to 25°C).
- Keep tiotropium bromide inhalation powder capsules away from heat and cold (do not freeze).
- Store tiotropium bromide inhalation powder capsules in a dry place. Throw away any unused tiotropium bromide inhalation powder capsules that have been open to air.

Ask your doctor or pharmacist if you have any questions about storing your tiotropium bromide inhalation powder capsules.

**Keep LupinHaler, tiotropium bromide inhalation powder capsules, and all medicines out of the reach of children.**

**General information about tiotropium bromide inhalation powder**

Medicines are sometimes prescribed for purposes other than those listed in Patient Information leaflets. Do not use tiotropium bromide inhalation powder for a purpose for which it has not been prescribed. Do not give tiotropium bromide inhalation powder to other people even if they have the same symptoms that you have. It may harm them.

For more information about tiotropium bromide inhalation powder, talk with your doctor. You can ask your doctor or pharmacist for information about tiotropium bromide inhalation powder that is written for health professionals.

For current prescribing information for tiotropium bromide inhalation powder, visit our website at [www.lupin.com/US/lupinhaler/](http://www.lupin.com/US/lupinhaler/), or for additional information you may also call Lupin Pharmaceuticals, Inc. at 1-800-399-2561.

**What are the ingredients in tiotropium bromide inhalation powder?**

Active ingredient: tiotropium

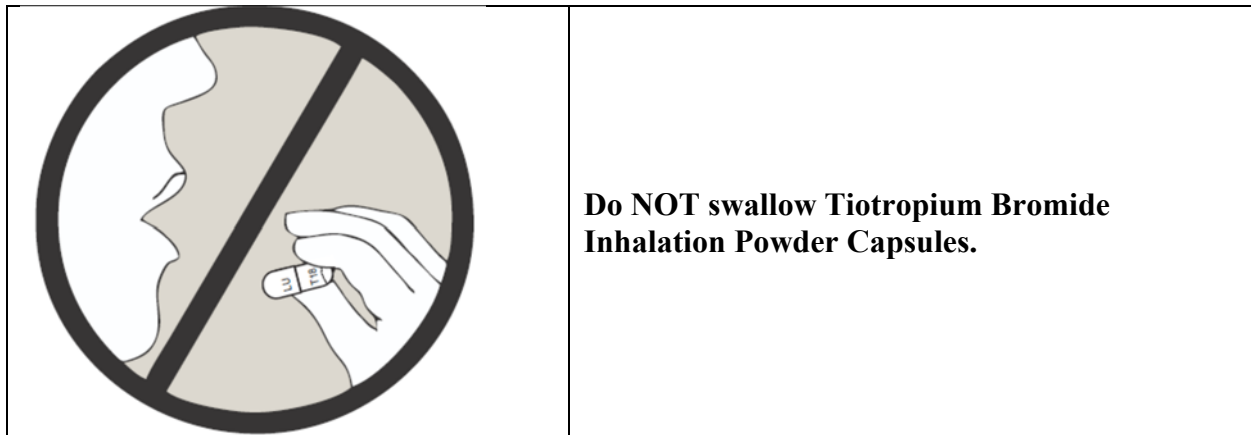
Inactive ingredient: lactose monohydrate

**What is COPD (Chronic Obstructive Pulmonary Disease)?**

COPD is a serious lung disease that includes chronic bronchitis, emphysema, or both. Most COPD is caused by smoking. When you have COPD, your airways become narrow. So, air moves out of your lungs more slowly. This makes it hard to breathe.

This Patient Information has been approved by the U.S. Food and Drug Administration.

**Instructions for Use**  
**Tiotropium Bromide (tye-oh-TROE-pee-um BROE-mide) Inhalation Powder LupinHaler®**



**Important Information about using your tiotropium bromide inhalation powder LupinHaler**

- **Do not swallow tiotropium bromide inhalation powder capsules.**
- **Tiotropium bromide inhalation powder capsules should only be used with the LupinHaler device and inhaled through your mouth (oral inhalation).**
- **Do not use your LupinHaler device to take any other medicine.**

First read the Patient Information, then read these Instructions for Use before you start to use tiotropium bromide inhalation powder LupinHaler and each time you refill your prescription. There may be new information.

**Becoming familiar with your LupinHaler device and tiotropium bromide inhalation powder capsules:**

Your tiotropium bromide inhalation powder comes with tiotropium bromide inhalation powder capsules in blister packaging and a LupinHaler device. Use the new LupinHaler device provided with your medicine.

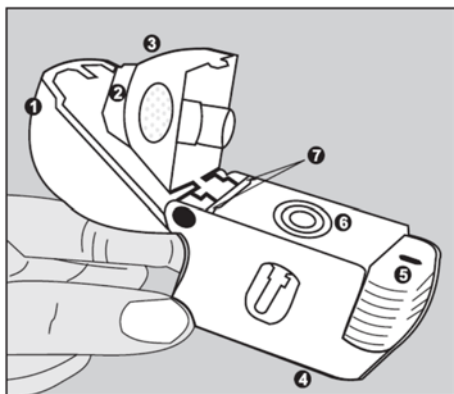


Figure A

The parts of your LupinHaler device include:

(See Figure A)

1. dust cap (lid)
2. mouthpiece
3. mouthpiece ridge
4. base
5. green piercing button
6. center chamber
7. air intake vents



Figure B

Each tiotropium bromide inhalation powder capsule is packaged in a blister. (See Figure B)

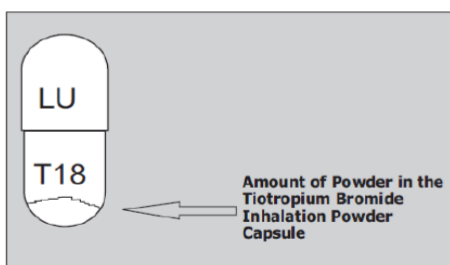


Figure C

- Each tiotropium bromide inhalation powder capsule contains only a small amount of powder. (See Figure C) This is 1 full dose.
- **Do not open the tiotropium bromide inhalation powder capsule** or it may not work.

**Taking your full daily dose of medicine requires 4 main steps.**

**Step 1. Opening your LupinHaler device:**

After removing your LupinHaler device from the pouch:

- Open the dust cap (lid) by pressing the green piercing button. (See Figure D)

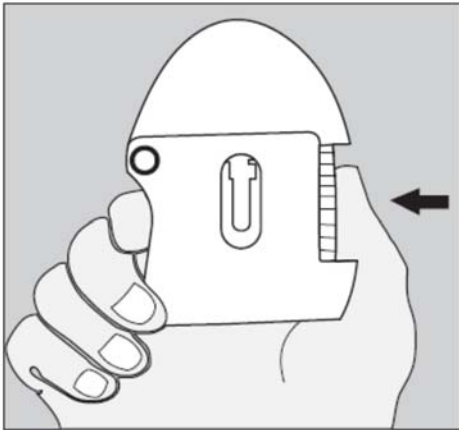


Figure D

- Pull the dust cap (lid) upwards away from the base to expose the mouthpiece. (See Figure E)

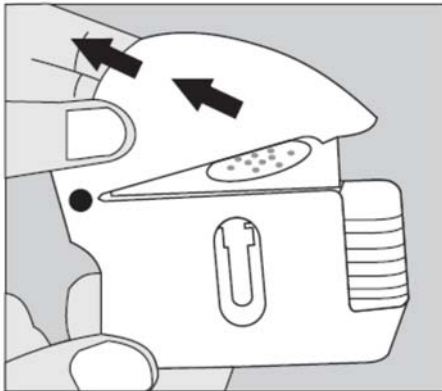


Figure E

- Open the mouthpiece by pulling the mouthpiece ridge up from the base so the center chamber is showing. (See Figure F)

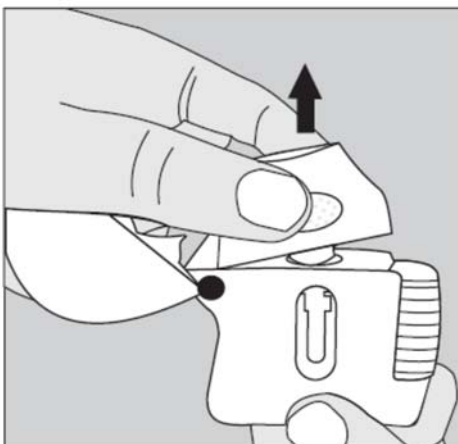


Figure F

**Step 2. Inserting the tiotropium bromide inhalation powder capsule into your LupinHaler device:**

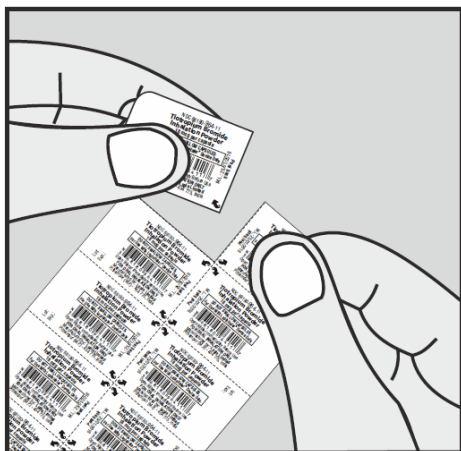


Figure G

Each day, separate only 1 of the blisters from the blister card by tearing along the perforated line. (See Figure G)

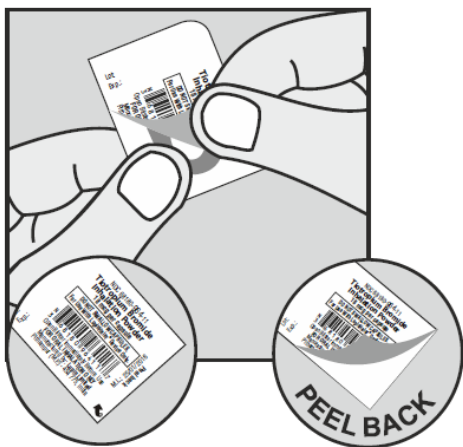


Figure H

**Remove the tiotropium bromide inhalation powder capsule from the blister:**

- **Do not** cut the foil or use sharp instruments to take out the tiotropium bromide inhalation powder capsule from the blister.
- Bend 1 of the blister corners with an arrow and separate the aluminum foil layers.
- Peel back the printed foil until you see the whole tiotropium bromide inhalation powder capsule. (See Figure H)
- If you have opened more than 1 blister to the air, the extra tiotropium bromide inhalation powder capsule should not be used and should be thrown away.

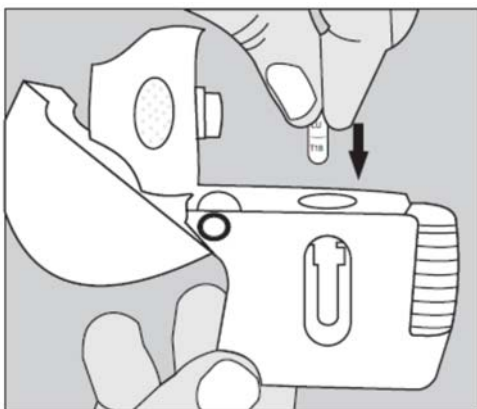


Figure I

Place the tiotropium bromide inhalation powder capsule in the center chamber of your LupinHaler device. (See Figure I)

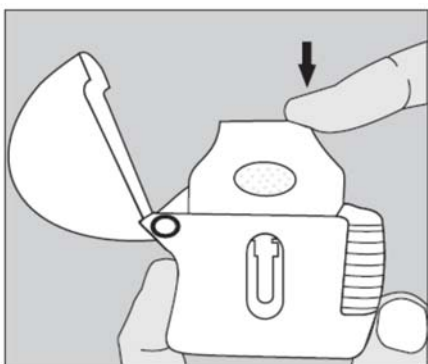


Figure J

Close the mouthpiece firmly against the white base until you hear a click. Leave the dust cap (lid) open. (See Figure J)

### Step 3. Piercing the tiotropium bromide inhalation powder capsule:

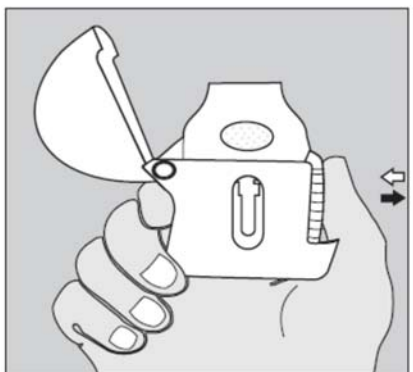


Figure K

- Hold your LupinHaler device with the mouthpiece pointed up. (See Figure K)
- Press the green piercing button once until it is flat (flush) against the base, then release. This is how you make holes in the tiotropium bromide inhalation powder capsule so that you get your medicine when you breathe in.
- **Do not** press the green button more than one time.
- **Do not** shake your LupinHaler device.
- The piercing of the tiotropium bromide inhalation powder capsule may produce small pieces of the capsule. Some of these small pieces may pass through the screen of your LupinHaler device into your mouth or throat when you breathe in your medicine. This is normal. The small pieces of the capsule should not harm you.

### Step 4. Taking your full daily dose (2 inhalations from the same tiotropium bromide inhalation powder capsule):

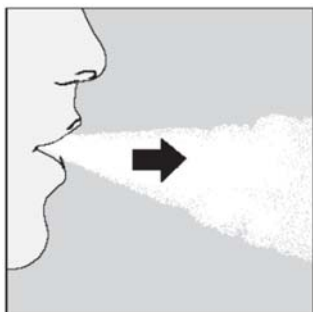


Figure L

**Breathe out completely in 1 breath**, emptying your lungs of any air. (See Figure L)

**Important: Do not** breathe into your LupinHaler device.

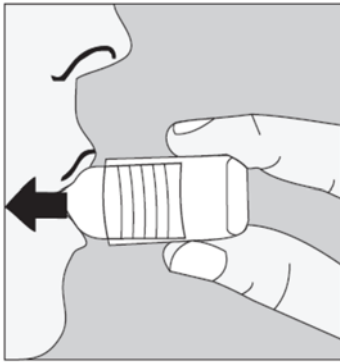


Figure M

**With your next breath, take your medicine:**

- **Hold your head in an upright position while you are looking straight ahead.** (See Figure M)
- Raise your LupinHaler device to your mouth in a horizontal position. **Do not** block the air intake vents.
- Close your lips tightly around the mouthpiece. **Breathe in deeply** until your lungs are full. You should **hear or feel the tiotropium bromide inhalation powder capsule vibrate (rattle)**. (See Figure M)
- Hold your breath for a few seconds and, at the same time, take your LupinHaler device out of your mouth.
- Breathe normally again.

The rattle tells you that you breathed in correctly. If you do not hear or feel a rattle, see the section, “If you do not hear or feel the tiotropium bromide inhalation powder capsule rattle as you breathe in your medicine.”

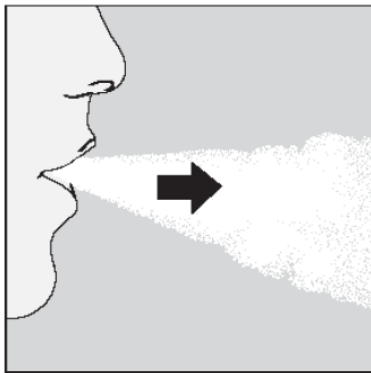


Figure N

**To get your full daily dose, you must again, breathe out completely (See Figure N) and for a second time, breathe in (See Figure O) from the same tiotropium bromide inhalation powder capsule.**

**Important: Do not** press the green piercing button again.

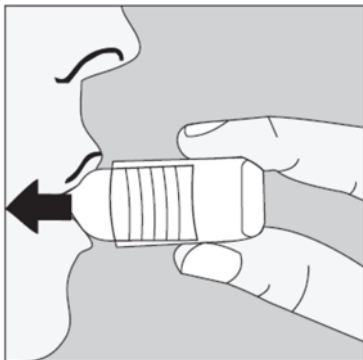


Figure O

**Remember:** To get your full medicine dose each day, you must breathe in 2 times from the same tiotropium bromide inhalation powder capsule. Make sure you breathe out completely each time before you breathe in from your LupinHaler device.



**Caring for and storing your tiotropium bromide inhalation powder LupinHaler:**

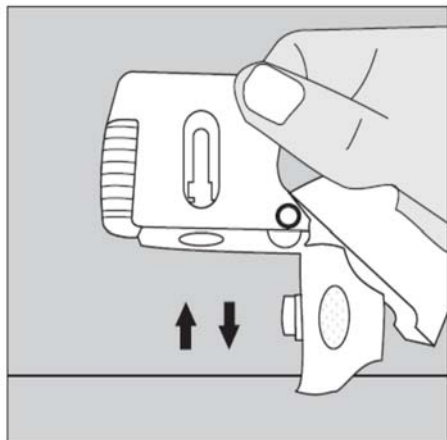


Figure P

- After taking your daily dose, open the mouthpiece and tip out the used tiotropium bromide inhalation powder capsule into your trash can, without touching it.
- Remove any tiotropium bromide inhalation powder capsule pieces or tiotropium bromide inhalation powder buildup by turning your LupinHaler device upside down and gently, but firmly, tapping it. (See Figure P) Then, close the mouthpiece and dustcap for storage.
- **Do not** store your LupinHaler device and tiotropium bromide inhalation powder capsules (blisters) in a damp moist place. Always store tiotropium bromide inhalation powder capsules in the sealed blisters.

**If you do not hear or feel the tiotropium bromide inhalation powder capsule rattle as you breathe in your medicine:**

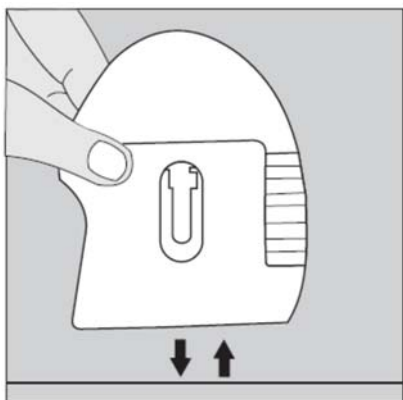


Figure Q

**Do not** press the green piercing button again.

Hold your LupinHaler device with the mouthpiece pointed up and tap your LupinHaler device gently on a table. (See Figure Q)

Check to see that the mouthpiece is completely closed. Breathe out completely before deeply breathing in again with the mouthpiece in your mouth. (See Figure O)

If you still do not hear or feel the tiotropium bromide inhalation powder capsule rattle after repeating the above steps:

- Throw away the tiotropium bromide inhalation powder capsule.
- Open the base by lifting the green piercing button and check the center chamber for pieces of the tiotropium bromide inhalation powder capsule. Tiotropium bromide inhalation powder capsule pieces in the center chamber can cause a tiotropium bromide inhalation powder capsule not to rattle.
- Turn your LupinHaler device upside down and gently, but firmly, tap to remove the tiotropium bromide inhalation powder capsule pieces. Call your doctor for instructions.

### **Cleaning your LupinHaler device:**

Clean your LupinHaler device as needed. (See Figure R)

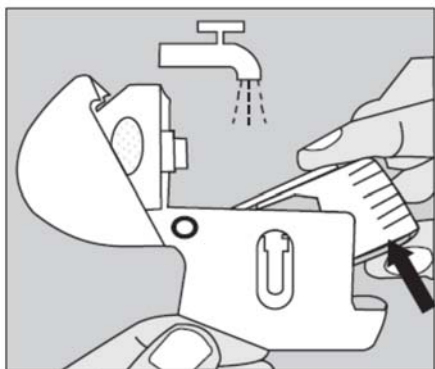


Figure R

- **It takes 24 hours to air dry your LupinHaler device** after you clean it.
- **Do not** use cleaning agents or detergents.
- **Do not** place your LupinHaler device in the dishwasher for cleaning.

### **Cleaning Steps:**

- Open the dust cap and mouthpiece
- Open the base by lifting the green piercing button.
- Look in the center chamber for tiotropium bromide inhalation powder capsule pieces or powder buildup. If seen, tap out.
- Rinse your LupinHaler device with warm water, pressing the green piercing button a few times so that the center chamber and the piercing needle is under the running water. Check that any powder buildup or tiotropium bromide inhalation powder capsule pieces are removed.
- Dry your LupinHaler device well by tipping the excess water out on a paper towel. Air-dry afterwards, leaving the dust cap, mouthpiece, and base open by fully spreading it out so that it dries completely.
- **Do not** use a hair dryer to dry your LupinHaler device.
- **Do not** use your LupinHaler device when it is wet. If needed, you may clean the outside of the mouthpiece with a clean damp cloth.

**Helpful Hints** to help ensure that you are properly taking your full daily dose of tiotropium bromide inhalation powder LupinHaler:

- **Press** the green piercing button **1 time; Breathe in 2 times; Breathe out completely** before each of the **2** inhalations.
- Always use the new LupinHaler device provided with your medicine.
- Keep your LupinHaler device with the mouthpiece pointed up when pressing the green piercing button.
- **Press the green piercing button 1 time** to pierce the tiotropium bromide inhalation powder capsule.
- Do not breathe out into your LupinHaler device.
- Keep your LupinHaler device in a horizontal position and keep your head upright, looking straight ahead, when breathing in.
- Check the center chamber of your LupinHaler device for tiotropium bromide inhalation powder capsule pieces or powder build-up. If pieces or powder are seen, tap out before use.
- Clean your LupinHaler as needed and dry thoroughly.

For current prescribing information for tiotropium bromide inhalation powder, visit our website at [www.lupin.com/US/lupinhaler/](http://www.lupin.com/US/lupinhaler/), or for additional information you may also call Lupin Pharmaceuticals, Inc. at 1-800-399-2561.

This Instructions for Use has been approved by the U.S. Food and Drug Administration.

LUPIN and the  are registered trademarks of Lupin Pharmaceuticals, Inc.

LupinHaler® is a registered trademark of Lupin Limited.

®The other brands listed are trademarks of their respective owners and are not trademarks of Lupin Pharmaceuticals, Inc. The makers of these brands are not affiliated with and do not endorse Lupin Pharmaceuticals, Inc. or its products.

Manufactured for:

**Lupin Pharmaceuticals, Inc.**

Naples, FL 34108

United States

Manufactured by:

**Lupin Limited**

Pithampur (M.P.) - 454 775

India

May 2025

ID#:278818